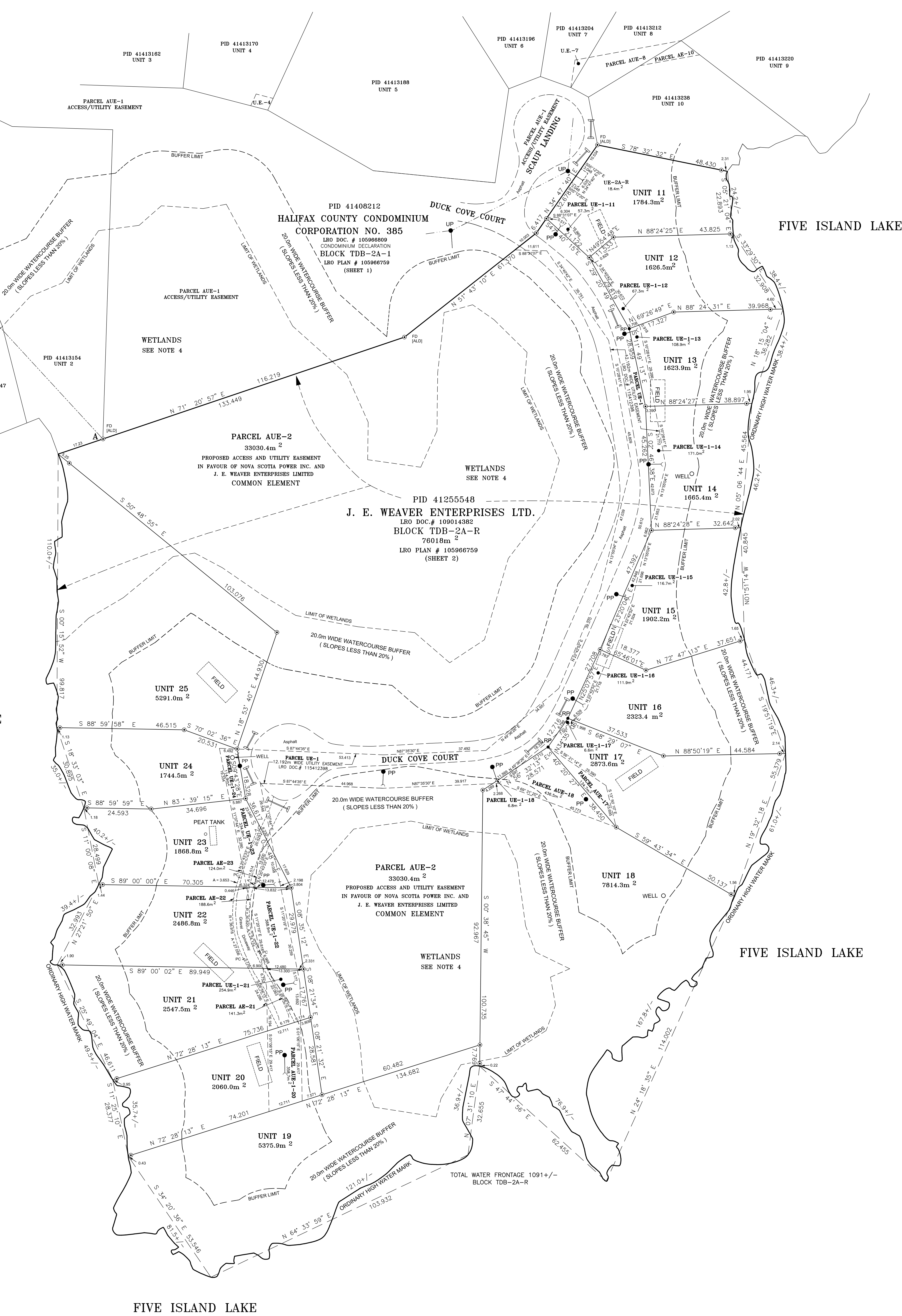


GRID NORTH

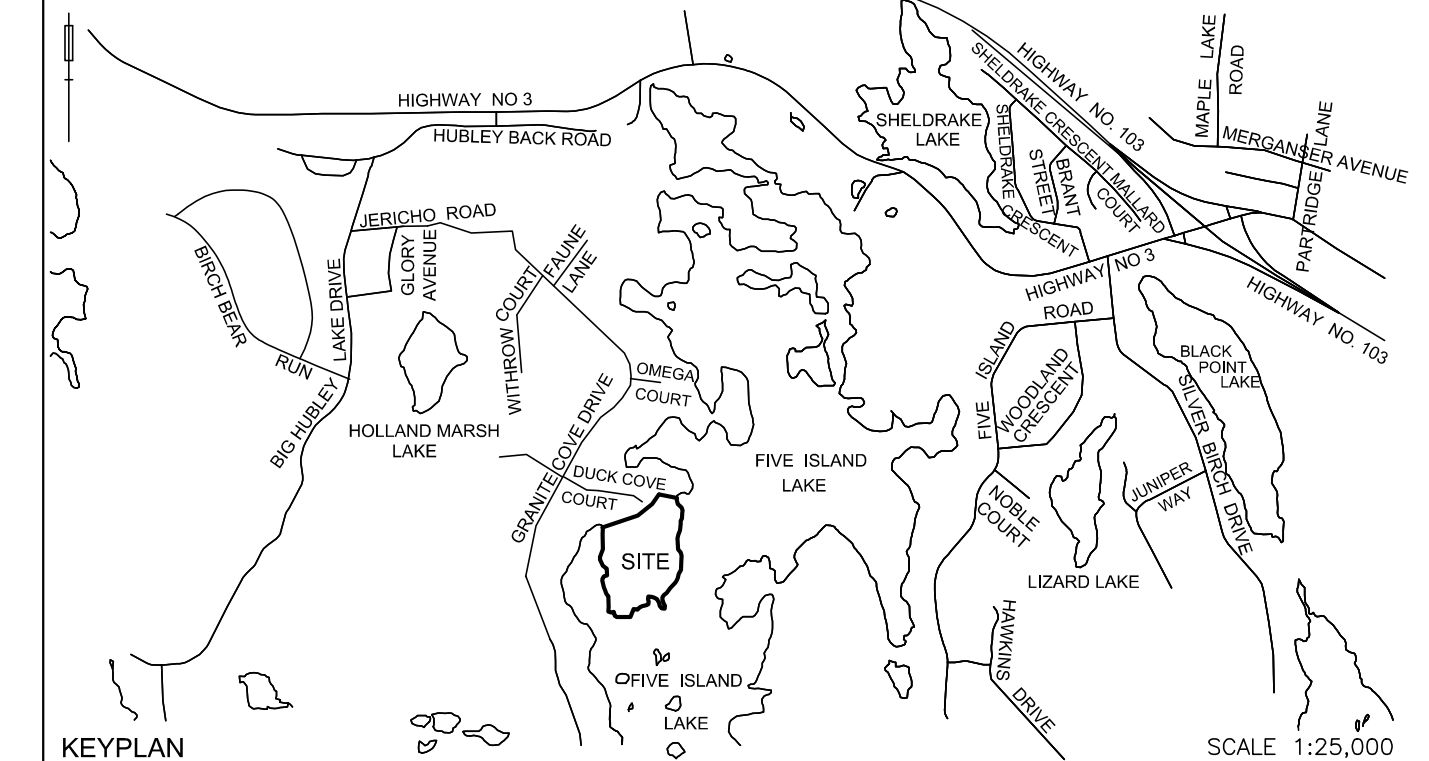
Grid Coordinate Table			
Point	Northing	Easting	Description
240012	4951497.835	25550809.160	NSHPN
A	4947397.337	25554588.411	SM (AID)

GNSS Survey Type	NRTK	Source	Brand/Net
Horizontal Datum (NAD83 (CSRS))	Epoch	2010.0	
Vertical Datum: CGVD2013	Calculated offset between CGVD13 to CGVD2013	-0.60 M	
Projection: UTM	Zone:	5	
Combined Scale Factor at the site of survey: 0.999928			



HALIFAX COUNTY CONDOMINIUM CORPORATION NO. 385

SHEET 1 OF 1



APPROVED FOR REGISTRATION THIS DAY OF _____ A.D. 2019

REGISTRAR/DEPUTY REGISTRAR OF CONDOMINIUMS
DECLARATION REGISTERED AT THE OFFICE OF THE REGISTRAR OF DEEDS AT HALIFAX
IN DOCUMENT NUMBER _____

CERTIFICATE OF OWNERS
I CERTIFY THAT THE PROPERTY INCLUDED IN THIS PLAN HAS BEEN LAID OUT IN UNITS AND COMMON ELEMENTS IN ACCORDANCE WITH MY INSTRUCTIONS.
DATED AT HALIFAX, NOVA SCOTIA, NOVEMBER 29, 2019.
J. EDWARD WEAVER
PRESIDENT

- LEGEND**
- SM SURVEY MARKER
 - RD ROCK POINT
 - UT UTILITY
 - FD FOUND
 - PL PLAN
 - ME MEASURED
 - UP UTILITY POLE
 - LD LAND SURVEYOR IDENTIFICATION
 - AL ALLEGEY SURVEY LIMITED
 - LD LAND REGISTRATION OFFICE
 - NSHPN NOVA SCOTIA HIGH PRECISION MONUMENT
 - BO BOUNDARY DEFINED BY THIS PLAN
 - PP PARCEL IDENTIFICATION NUMBER (LAND INFORMATION SERVICES)
 - LD LAND INFORMATION SERVICES
 - PP CANADIAN SPATIAL REFERENCING SYSTEM
 - CGRS CANADIAN SPATIAL REFERENCING SYSTEM
 - OS OS OPEN SOURCE NAVIGATION SATELLITE SYSTEM
 - CC CONCRETE WITH CONCRETE BLOCK/ROAD
 - ARC ARC
 - R RADIUS
 - PC POINT OF CURVATURE
- BOUNDARIES OF UNITS**
BARE LAND UNITS 11 TO 25 CONSTRUCTED UPON THE PHASE 2 LANDS ARE UNITS CONSISTING PARTIALLY OR WHOLLY OF LAND. THE UNIT BOUNDARIES FOR SAID BARE LAND UNITS ARE SHOWN ON THIS SHEET AND ALSO DESCRIBED IN THE ATTACHED DECLARATION AS SCHEDULES "A-1" TO "A-15" AND ARE ALL OTHER RESPECTS SUBJECT TO THE BOUNDARIES OF "UNIT" PROVISIONS SET OUT IN ARTICLE 1.05 OF THE DECLARATION.

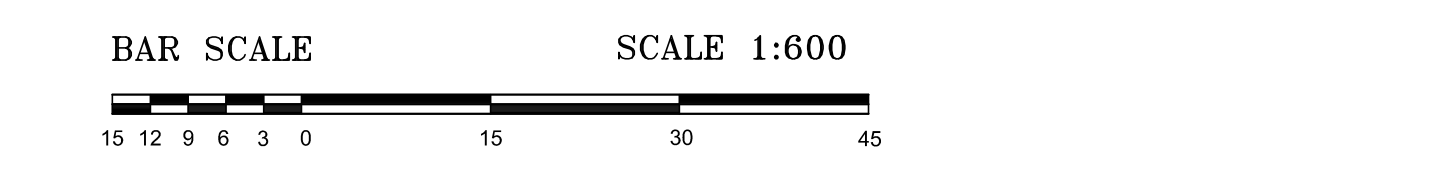
- NOTES**
- BEARINGS REFER TO ZONE 5, CENTRAL MERIDIAN 64° 30' WEST OF THE NOVA SCOTIA 3° T.M. PROJECTION OF NAD83 (CSRS) 2010 HORIZONTAL REFERENCE FRAME AND ARE DERIVED FROM GNSS OBSERVATIONS RELATED TO NSHPN MONUMENT NUMBER 240012.
 - LOT DISTANCES SHOWN ON THE PLAN ARE GRID DISTANCES.
 - FIELD SURVEYS WERE EXECUTED DURING THE PERIOD OCTOBER 12, 2018 TO NOVEMBER 21, 2019.
 - WETLANDS WERE DELINEATED BY L.M. MARITIME TESTING (1965) LIMITED BETWEEN SEPTEMBER 24 AND OCTOBER 1, 2009.

PLAN OF SURVEY SHOWING BOUNDARIES AND UNIT BOUNDARIES OF **BLOCK TDB-2A-R PHASE 2 - THREE BROOKS VILLAGE UNITS 11 TO 25** LAYS OUT BY **J. E. WEAVER ENTERPRISES LTD.** OFF GRANITE COVE DRIVE HUBLEY **NOVA SCOTIA** DATED NOVEMBER 29, 2019 DRAWING NO. 19-06

SURVEYOR'S CERTIFICATE
I CERTIFY THAT:
* THIS PLAN ACCURATELY SHOWS THE MANNER IN WHICH THE LAND LOCATED IN THE PLAN HAS BEEN SURVEYED BY ME.
* THIS PLAN AND SURVEY ARE CORRECT AND HAVE BEEN MADE IN ACCORDANCE WITH THE CONDOMINIUM ACT AND THE REGULATIONS MADE UNDER THE ACT.
* THE SURVEY WAS COMPLETED ON NOVEMBER 29, 2019.
DATED AT HAMMONDS PLAINS, NOVA SCOTIA NOVEMBER 29, 2019.

LAWRENCE G. MILLER
NOVA SCOTIA LAND SURVEYOR

SURVEYOR'S CERTIFICATE
I, LAWRENCE G. MILLER, NOVA SCOTIA LAND SURVEYOR, HEREBY CERTIFY THAT THE SURVEY REPRESENTED BY THIS PLAN WAS CONDUCTED UNDER MY SUPERVISION AND THAT THE SURVEY AND PLAN WERE MADE IN ACCORDANCE WITH THE LAND SURVEYOR'S ACT, REGULATIONS AND STANDARDS MADE THERE UNDER. DATED THIS 29TH DAY OF NOVEMBER, 2019.
N.S.L.S.



IDENTIFIER	LOCATION	INTEREST HOLDER	EASEMENT TYPE
UT-2A-R	UNIT 11	NOVA SCOTIA POWER INC.	UTILITY
PARCEL UE-1-11	UNIT 11	NOVA SCOTIA POWER INC.	UTILITY
PARCEL UE-1-12	UNIT 12	NOVA SCOTIA POWER INC.	UTILITY
PARCEL UE-1-13	UNIT 13	NOVA SCOTIA POWER INC.	UTILITY
PARCEL UE-1-14	UNIT 14	NOVA SCOTIA POWER INC.	UTILITY
PARCEL UE-1-15	UNIT 15	NOVA SCOTIA POWER INC.	UTILITY
PARCEL UE-1-16	UNIT 16	NOVA SCOTIA POWER INC.	UTILITY
PARCEL UE-1-17	UNIT 17	NOVA SCOTIA POWER INC.	UTILITY
PARCEL UE-1-18	UNIT 18	NOVA SCOTIA POWER INC.	UTILITY
PARCEL UE-1-19	UNIT 19	NOVA SCOTIA POWER INC.	UTILITY
PARCEL UE-1-20	UNIT 20	NOVA SCOTIA POWER INC.	UTILITY
PARCEL UE-1-21	UNIT 21	NOVA SCOTIA POWER INC.	UTILITY
PARCEL UE-1-22	UNIT 22	NOVA SCOTIA POWER INC.	UTILITY
PARCEL UE-1-23	UNIT 23	NOVA SCOTIA POWER INC.	UTILITY
PARCEL UE-1-24	UNIT 24	NOVA SCOTIA POWER INC.	UTILITY
PARCEL UE-2	PARCEL AUE-2 COMMON ELEMENT	J. E. WEAVER ENTERPRISES LIMITED	ACCESS/UTILITY

ACUTE SURVEYS INC.
Hammonds Plains, Nova Scotia
902 457-4622
Lawrence G. Miller
NOVA SCOTIA LAND SURVEYOR